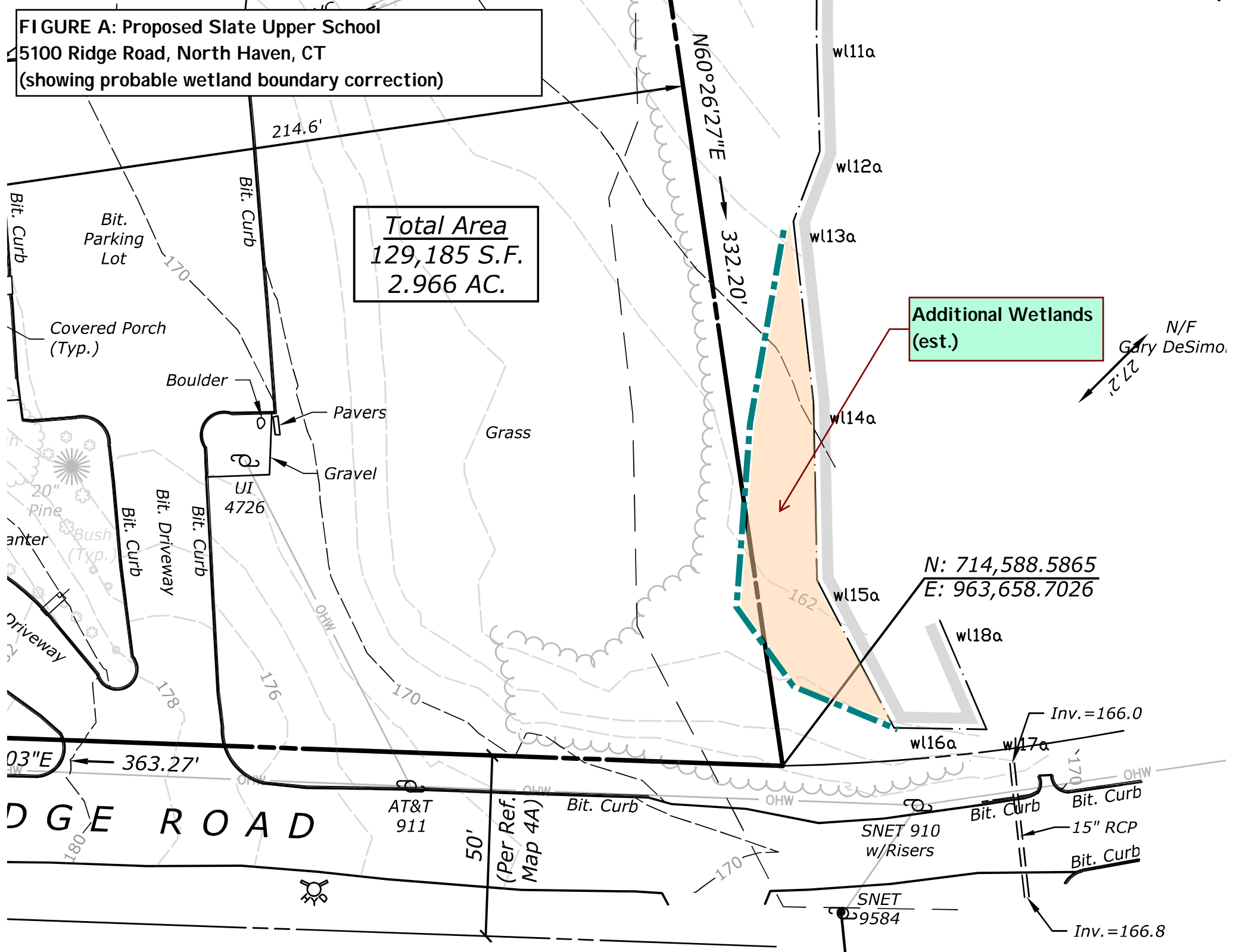


FIGURE A: Proposed Slate Upper School
5100 Ridge Road, North Haven, CT
 (showing probable wetland boundary correction)



Total Area
 129,185 S.F.
 2.966 AC.

Additional Wetlands
 (est.)

N: 714,588.5865
 E: 963,658.7026

ACCESSIBLE
 Bit. Curb
 Bit. Parking Lot
 Covered Porch (Typ.)
 Boulder
 Pavers
 Gravel
 UI 4726
 Bit. Driveway
 Bit. Curb
 Bit. Curb
 Bit. Curb
 20" Pine
 Bush (Typ.)
 Driveway
 Ridge Road
 AT&T 911
 SNET 910 w/Risers
 SNET 9584
 15" RCP
 Bit. Curb
 Inv.=166.0
 Inv.=166.8

214.6'
 N60°26'27"E
 332.20'
 w11a
 w12a
 w13a
 w14a
 w15a
 w16a
 w17a
 w18a
 162
 170
 176
 178
 363.27'
 03"E
 50'
 (Per Ref. Map 4A)

27.2'
 N/F Gary DeSimo